



21/55-57 Glencoe Street, SUTHERLAND

UNDER CONTRACT

With lovely leafy surroundings and outlook, this massive unit (122sqm on title) is drenched in sunlight due to its Northern aspect. Perfectly positioned on level 1 of this exceptionally well maintained and secure complex. Other features include:

- Oversized kitchen with ample cupboard and bench space
- Huge bedroom with built-in wardrobe
- Bright open plan living/dining area with Northerly exposure
- Neat & tidy bathroom with separate bath & shower
- Huge sunny courtyard
- Lock up garage
- Security entrance and lift access
- Massive 122sqm on title

Conveniently located in proximity to a choice of public transport, schools, parks, shops & cafes. Making this an ideal proposition for first home buyers, downsizers or astute investors.

PRICE GUIDE: \$575,000.00

Area:	120 m2
Council Rates:	\$346.00 p.q.
Water Rates:	\$147.00 p.q.
Strata Levy:	\$1,052.14 p.q.



Walter Glaser
0402443777

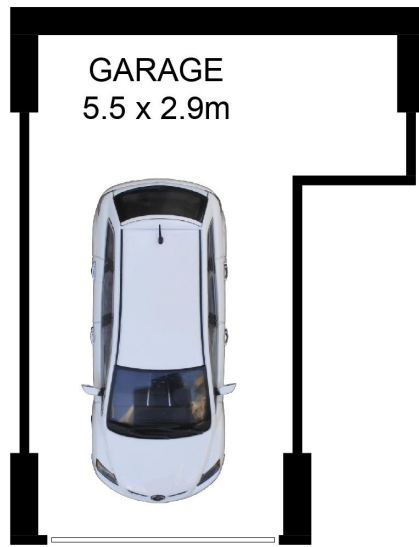
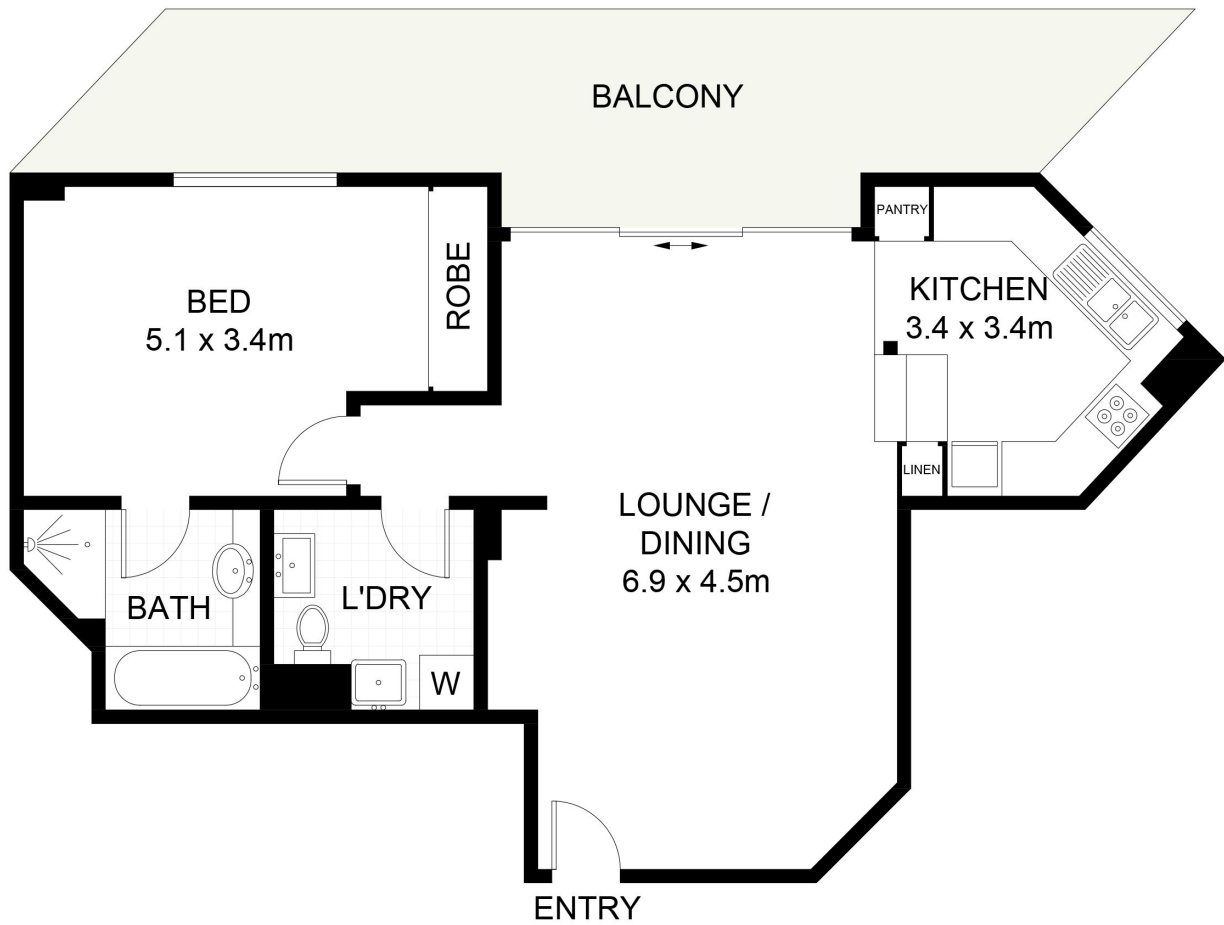


Jonathan Levy
0420220465

argyproperty

OFFICE

02 9588 4888



(NOT SHOWN IN ACTUAL
LOCATION / ORIENTATION)

21/55-56 Glencoe Street, Sutherland



Scale in metres. Indicative only. Dimensions are approximate. All information contained herein is gathered from sources we believe to be reliable. However, we cannot guarantee its accuracy and interested persons should rely on their own enquiries. Some images may contain digital furniture.