



8/133 Queen Victoria Street, BEXLEY

Bright & Sunny

Positioned in a highly desirable complex, this impressive North facing 2 bedroom villa experiences an abundance of natural light through its large windows. It's generous proportions, high ceilings and level access, it makes an ideal home for those downsizing or the young family. Other features include:

- Spacious 2 bedrooms, huge main bedroom with built-in-robe
- Oversize sun drenched combined lounge & dining area
- Updated eat-in kitchen with stainless appliances & plenty of storage
- Very neat & tidy original bathroom with separate bath tub and shower
- Separate toilet and internal laundry
- Quality carpet throughout
- Low maintenance private courtyard
- Well looked after boutique complex of 9
- Lock-up garage with internal access

Approximately 650m Bexley shops, and other lifestyle and conveniences, allowing you to enjoy everything this wonderful suburb has to offer.

PRICE GUIDE: \$695,000.00

Area: 122 m2
Council Rates: \$348.00 p.q.
Water Rates: \$178.00 p.q.
Strata Levy: \$2,503.00 p.q.

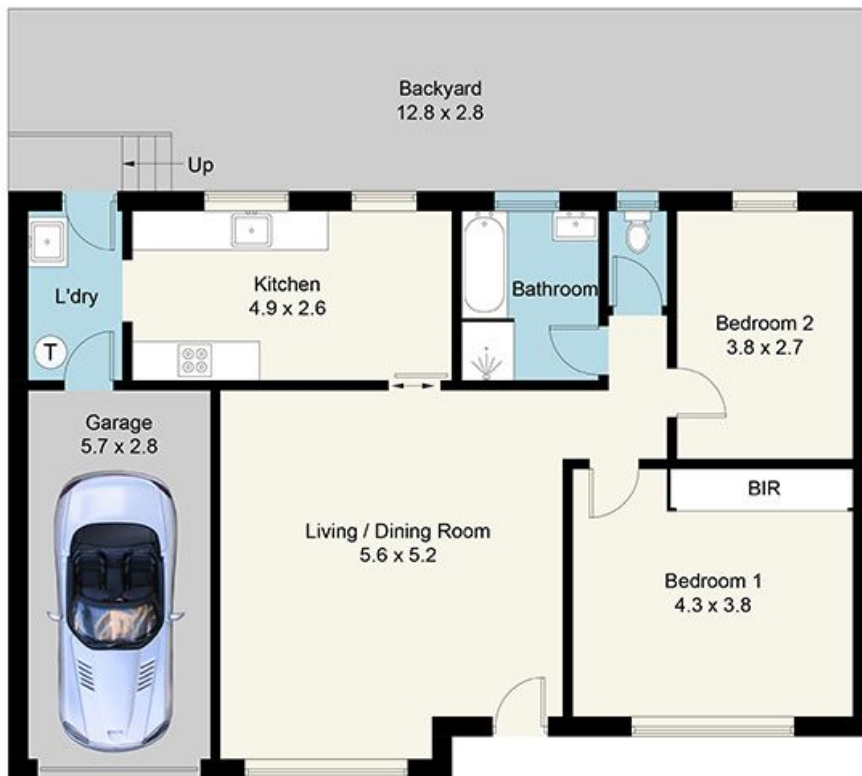


Walter Glaser
0402443777

argyproperty

OFFICE

02 9588 4888



8/133 Queen Victoria Street, Bexley, NSW 2207

Please note: All stated dimensions are approximate only.
Particulars given are of general information only and do not constitute any representation on the part of the vendor or agent.



argyproperty.com.au