



PRICE GUIDE: TWILIGHT AUCTION

Area: 131 m2
Strata Levy: \$1,121.50 p.q.

WHEN ONLY THE BEST WILL DO!

Very rarely do we see apartments of such an exclusive standard. This apartment is for those who have an eye for fine detail, appreciate quality and luxury.

- ☑ Versace inspired interior design
- ☑ North Eastern Aspect delivering abundance of natural light
- ☑ Generously proportioned lounge and dining area
- ☑ Elegant porcelain tiled on acoustic insulated flooring
- ☑ Ultra modern polyurethane & granite kitchen
- ☑ Carefully positioned down lights in the ceilings and walls
- ☑ Customized glass shelves with brass fittings & customized cabinetry.
- ☑ 3 exceptionally well sized bedrooms, all facing North East
- ☑ Oversized main incorporating en-suite and built-in wardrobe.
- ☑ Contemporary main bathroom with feature tiling
- ☑ Luxury spa bath and superb brass taps & fittings
- ☑ Solid timber doors with European style locks used throughout
- ☑ Laundry incorporates custom cabinetry, vanity unit and 3rd toilet.
- ☑ Perfectly located within the heart of Kogarah CBD, close to station, shops and other amenities virtually at you

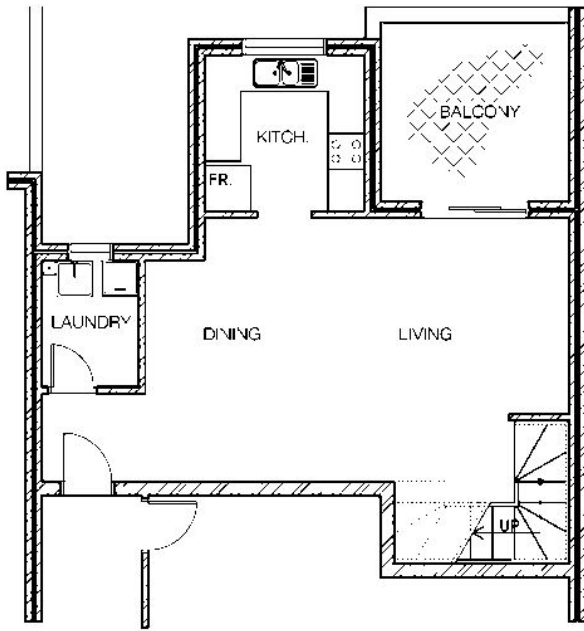


Walter Glaser
0402 443 777

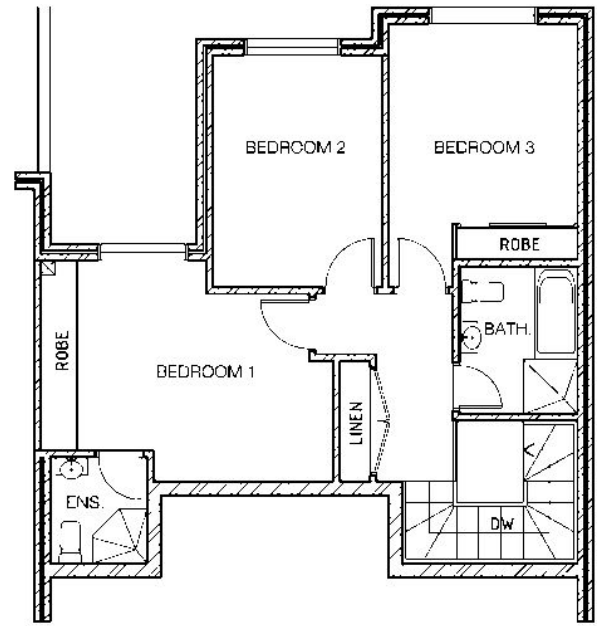
argyproperty

OFFICE

02 9588 4888



LOWER FLOOR PLAN



UPPER FLOOR PLAN